

HYDROSTATIC STEERING UNITS TYPE HKU(S).../5(D)(T)(TU) —————



The HKU(S).../5(D)(T)(TU) range expands the steering units family of M+S Hydraulic with the "Closed Center - Non Reaction and Load Sensing Outlet" version (static and dynamic hydraulic connection to the priority valve).

This range is manufactured in two versions; for modularly and pipe mounting and therefore were developed the two versions of priority (tracing) valves: PRD... and PRT...

HKU.../5 is designed to be connected to priority valves with built-in relief valves for rated flow up to 160 lpm [42 GPM] - PRT.../160.

The control hydraulic circuits of the HKU(S).../5(T) steering units were designed to ensure minimal energy consumption (energy losses) in various hydraulic systems, such as those of: fork-lift trucks, agricultural and construction machines and others.

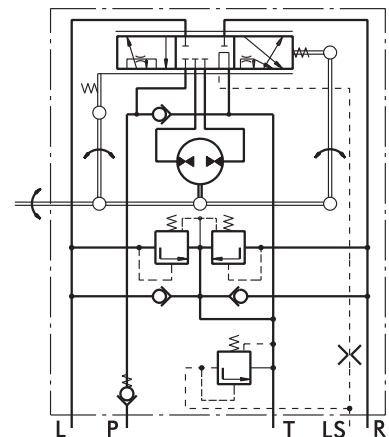
HKU.../5TU is a steering unit at which the ports R and L in neutral position are connected to the drain line T. This scheme contributes for the fast discharge of the residual pressure in lines L and R, that usually is locked when the steering wheel is jerky released at neutral position. These steering units do not drive directly the steering cylinders, but they are connected to hydraulic systems in which they drive the flow amplifiers or other devices.

HKUS/5D(DT)... is a new generation steering unit, where the dynamic flow to LS-line allows easy and smooth control when starting the steering. Main features are: Low torque of the steering wheel $0,5 \pm 2,0$ Nm [4.5 ± 18 lb-in] at normal operating conditions; High steering speed, limited only by the operating flow and the pressure of the supplying pump; Constant oil flow to LS-line at neutral position within $0,45 \pm 0,9$ lpm [$.12 \pm .24$ GPM]. The unit works in a system with a dynamic priority valve and is appropriate for machines with increased energy saving requirements.

M+S Hydraulic produces steering units type HKUS.../5E(5TE) which have additional EL-port. An electro-hydraulic relay can be mounted on this port, providing control of the hydraulic system. For more information please refer to M+S Hydraulic.

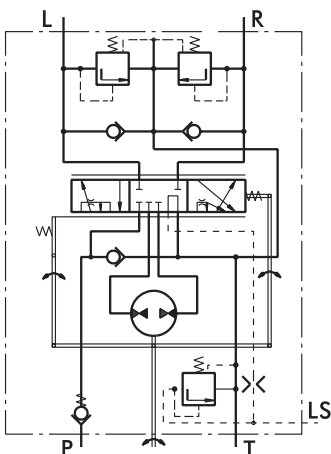
*For operation in condition of Thermal Shock see the notes on page 6.

Modularity Mounting

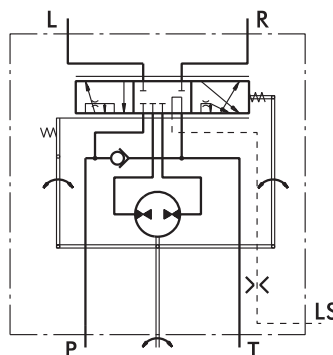


HKUS.../5

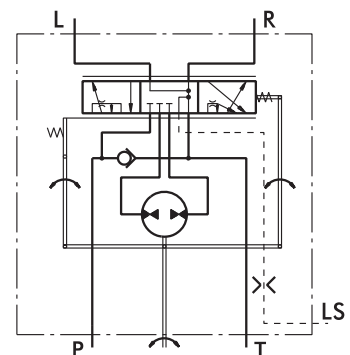
Pipe Mounting



HKUS.../5T



HKU.../5T



HKU.../5TU

SPECIFICATION DATA

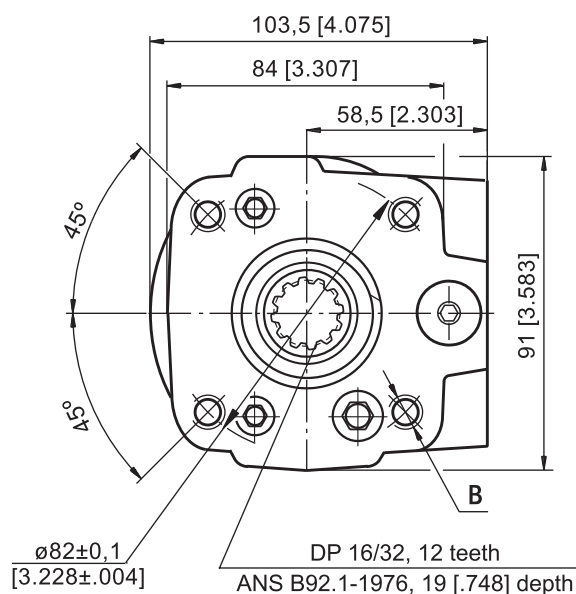
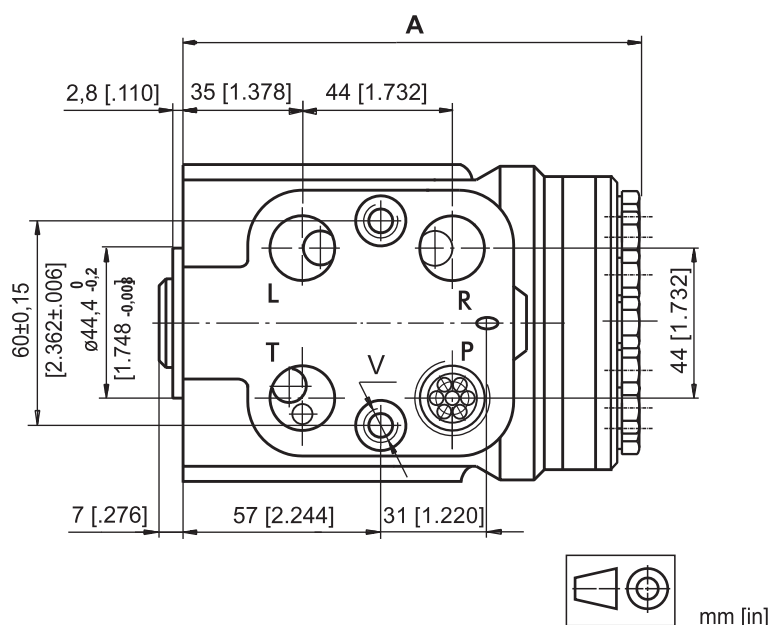
Parameters		Type													
		HKU 40/5T	HKU 50/5T	HKU 63/5T	HKU 80/5T	HKU 100/5T	HKU 125/5T	HKU 160/5T	HKU 200/5T	HKU 250/5T	HKU 320/5T	HKU 400/5T	HKU 500/5T	HKU 630/5T	
		HKUS 40/5...	HKUS 50/5...	HKUS 63/5...	HKUS 80/5...	HKUS 100/5...	HKUS 125/5...	HKUS 160/5...	HKUS 200/5...	HKUS 250/5...	HKUS 320/5...	HKUS 400/5...			
Displacement	cm ³ /rev [in ³ /rev]	39,6 [2.42]	49,5 [3.0]	65,6 [4.0]	79,2 [4.83]	99,0 [6.04]	123,8 [7.56]	158,4 [9.67]	198 [12.1]	247,5 [15.1]	316,8 [19.3]	396 [24.2]	495 [30.2]	623,6 [38.05]	
Rated Flow*	lpm [GPM]	4 [1.1]	5 [1.3]	6 [1.6]	8 [2.1]	10 [2.6]	13 [3.4]	16 [4.2]	20 [5.3]	25 [6.6]	32 [8.4]	40 [10.6]	50 [13.2]	63 [16.6]	
Rated Pressure	bar [PSI]	125 [1810]	150 [2175]	175 [2540]											
LS-Valve Pressure Settings**	bar [PSI]	80 [1160] 100 [1450] 125 [1810] 150 [2175] 175 [2540]													
Shock Valves Pressure Settings***	bar [PSI]	140 [2030] 160 [2320] 180 [2610] 200 [2900] 240 [3480]													
Max. Cont. Pressure in Line T	bar [PSI]														
- standard		20 [290]													
- high pressure (H option)		40 [580]													
Max. Torque at Servoamplifying	Nm [lb-in]														
-with standard springs		3,0 [26]									3,0 [26]				
-with soft springs (LT option)		1,8 [16]									-				
Max. Torque w/o Servoamplifying	Nm [lb-in]	120 [1065]													
Weight	kg [lb]	5,3 [11.7]	5,4 [11.9]	5,5 [12.2]	5,6 [12.4]	5,7 [12.6]	5,8 [12.8]	6,0 [13.2]	6,3 [13.9]	6,5 [14.3]	7,0 [15.4]	7,4 [16.3]	8,0 [17.6]	8,7 [19.2]	
Dimension A	mm [in]	130,8 [5.15]	132,2 [5.20]	133,9 [5.27]	136,2 [5.36]	138,8 [5.47]	142,2 [5.60]	146,8 [5.78]	152,2 [5.99]	158,8 [6.25]	168,2 [6.62]	178,8 [7.04]	192 [7.56]	209,3 [8.24]	

* Rated Flow at 100 RPM.

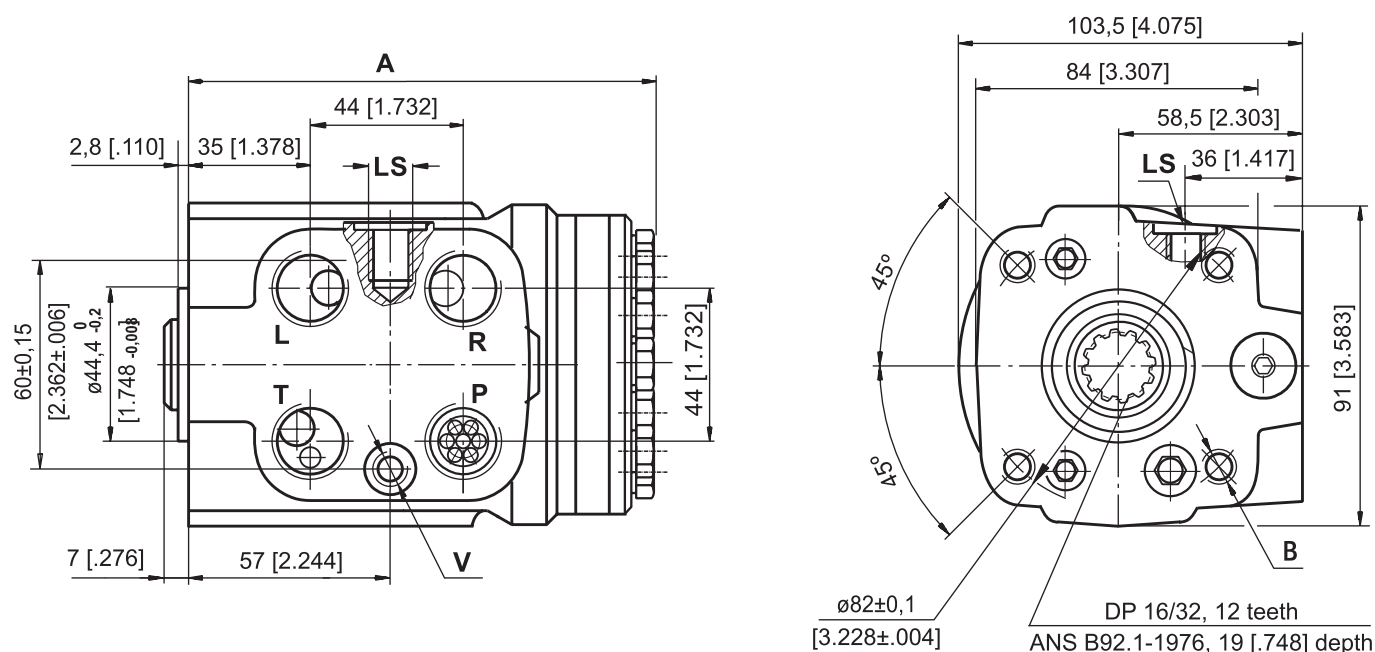
** Pressure Settings are at flow rate of 25 lpm [6.6 GPM] and viscosity 21 mm²/s [105 SUS] at 50° C [122°F], supplied through priority valve.

***Pressure Settings are at flow rate of 2 lpm [.53 GPM] and viscosity 21 mm²/s [105 SUS] at 50° C [122°F].

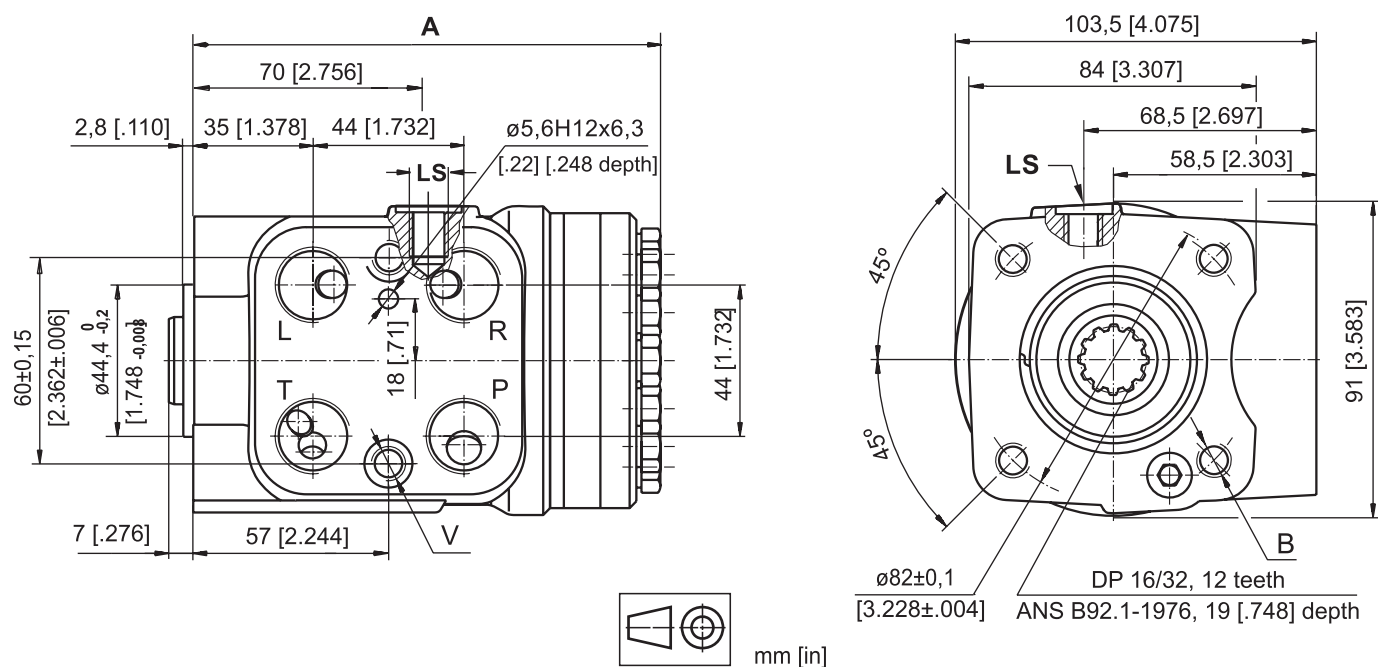
DIMENSIONS AND MOUNTING DATA - HKUS.../5(D)



DIMENSIONS AND MOUNTING DATA - HKUS.../5T(DT)



DIMENSIONS AND MOUNTING DATA - HKU.../5T(TU)



C o d e	Ports - P*, T, R, L Thread	Column Mounting Thread - B	Valve Mounting Thread- V	LS - Port
-	G1/2 17 [.67] depth	4 x M10 18 [.71] depth	2 x M10x1 16 [.63] depth	G1/4 14 [.55] depth
M	M22x1,5 17 [.67] depth	4 x M10 18 [.71] depth	2 x M10x1 16 [.63] depth	G1/4 .14 [.55] depth
A	3/4 - 16 UNF O-ring 17 [.67] depth	4 x 3/8 - 16 UNC 15,7 [.62] depth	2 x 3/8 - 24 UNF 14,2 [.56] depth	7/16 - 20 UNF O-ring 12,7 [.50] depth

*Threaded Ports P min 16 [.63] depth for pipe mounting.

ORDER CODE for HKUS.../5...

1	2	3	4	5	6	7	8	9	10
HKUS		/	5		-				

Pos.1 - Displacement code (see Specification Data)

40	-	39,6	[2.42]	cm ³ /rev	[in ³ /rev]
50	-	49,5	[3.00]	cm ³ /rev	[in ³ /rev]
63	-	65,6	[4.00]	cm ³ /rev	[in ³ /rev]
80	-	79,2	[4.83]	cm ³ /rev	[in ³ /rev]
100	-	99,0	[6.04]	cm ³ /rev	[in ³ /rev]
125	-	123,8	[7.56]	cm ³ /rev	[in ³ /rev]
160	-	158,4	[9.67]	cm ³ /rev	[in ³ /rev]
200	-	198,0	[12.10]	cm ³ /rev	[in ³ /rev]
250	-	247,5	[15.10]	cm ³ /rev	[in ³ /rev]
320	-	316,8	[19.30]	cm ³ /rev	[in ³ /rev]
400	-	396,0	[24.20]	cm ³ /rev	[in ³ /rev]

Pos.2 - Versions

5	-	Version 5"Closed Center - Non Reaction and Load Sensing Outlet"
---	---	---

Pos.3 - Signal Type

omit	-	Static Load Signal
D	-	Dynamic Load Signal

Pos.4 - Priority Valve Connection

omit	-	Modulory Mounting
T	-	Pipe Mounting

Pos.5 - LS - Valve Pressure Settings, bar

80	100	125	150	175
----	-----	-----	-----	-----

Pos.6 - Ports

omit	-	BSPP (ISO 228)
M	-	Metric (ISO 262)
A	-	SAE (ANSI B 1.1 - 1982)

Pos.7 - Max. Cont. Pressure in line T

omit	-	Standard
H	-	High pressure

Pos.8 - Input torque

omit	-	Standard
LT*	-	Low

Pos.9 - Option (Paint)**

omit	-	No Paint
P	-	Painted Low Gloss Color
PC	-	Corrosion Protected Paint

Pos.10 - Design Series

omit	-	Factory specified
------	---	-------------------

Notes:

* Available only for displacement from 40 to 200.

** Colour at customers request.

The steering units are mangano-phosphatized as standard.

ORDER CODE for HKU.../5T...

1	2	3	4	5	6	7	8
HKU		/	5	T	-		

Pos.1 - Displacement code (see Specification Data)

40	-	39,6	[2.42]	cm ³ /rev	[in ³ /rev]
50	-	49,5	[3.00]	cm ³ /rev	[in ³ /rev]
63	-	65,6	[4.00]	cm ³ /rev	[in ³ /rev]
80	-	79,2	[4.83]	cm ³ /rev	[in ³ /rev]
100	-	99,0	[6.04]	cm ³ /rev	[in ³ /rev]
125	-	123,8	[7.56]	cm ³ /rev	[in ³ /rev]
160	-	158,4	[9.67]	cm ³ /rev	[in ³ /rev]
200	-	198,0	[12.10]	cm ³ /rev	[in ³ /rev]
250	-	247,5	[15.10]	cm ³ /rev	[in ³ /rev]
320	-	316,8	[19.30]	cm ³ /rev	[in ³ /rev]
400	-	396,0	[24.20]	cm ³ /rev	[in ³ /rev]
500	-	495,0	[30.20]	cm ³ /rev	[in ³ /rev]
630	-	623,6	[38.05]	cm ³ /rev	[in ³ /rev]

Pos.2 - Versions

5	-	Version 5"Closed Center - Non Reaction and Load Sensing Outlet"
---	---	---

Pos.3 - Priority Valve Connection

T	-	Pipe Mounting (only)
TU	-	Pipe Mounting (ports R and L in neutral position are connected to the drain line T)

Pos.4 - Ports

omit	-	BSPP (ISO 228)
A	-	SAE (ANSI B 1.1 - 1982)
M	-	Metric (ISO 262)

Pos.5 - Max. Cont. Pressure in line T

omit	-	Standard
H	-	High pressure

Pos.6 - Input torque

omit	-	Standard
LT*	-	Low

Pos.7 - Option (Paint)**

omit	-	No Paint
P	-	Painted Low Gloss Color
PC	-	Corrosion Protected Paint

Pos.8 - Design Series

omit	-	Factory specified
------	---	-------------------

Notes: * Available only for displacement from 40 to 200.

** Colour at customers request.

The steering units are mangano-phosphatized as standard.